

# Classic Roll-Up

by expolinc

With your Roll-Up in hand, you are always ready with a fast presentation. Easy to carry and easy to set up. Just like a window shade.

When the meeting is over, the banner is retracted back into its cassette. Then, just hang the carrying case over your shoulder, and you're off to your next meeting. Can anything be simpler? The banner itself has no distracting

## Just as easy as a window shade

borders, or other intruding details.

While travelling, the banner and its message rests well protected inside the cassette.

Replacing the message is done with a few simple movements—which can be done at your supplier. It is also possible to do so at home. For those of you who switch displays often, a few simple instructions are provided.

Lighting is important. A high-quality spotlight, available as an accessory, provides an evenly lit area across the entire display.



The Roll-Up Classic comes in either silver or black.

The depth of the cassette makes a Roll-Up Classic stand solidly.

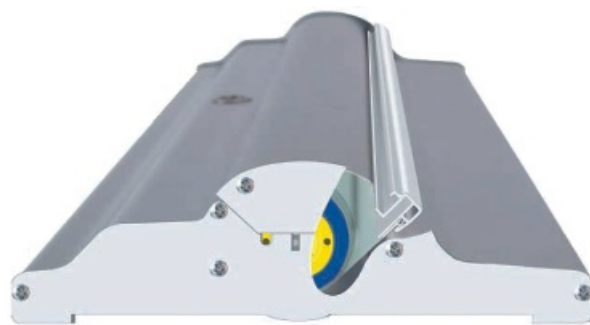




## STANDARD PACKAGE - panel excl.

The Roll-Up Classic offers unique opportunities for replacing the display easily. The standard package contains a complete roll-up banner system, available in four banner widths: 700, 850, 1000 and 1150 mm.

The standard package includes a carrying case.



**Carrying case**  
A padded case of tough, sturdy material with strap and handle.

## ACCESSORIES

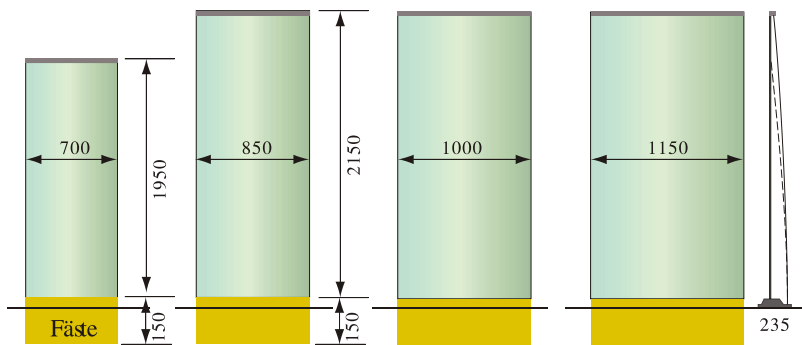
### Lightning

A low-voltage spotlight is available for the system. It provides an evenly lit area across the entire banner. It has its own padded carrying case that can be strapped to the standard carrying case. This means that you still have only one thing to carry.



## IMAGE SIZES

Roll-Up Classic 700 Art nr S4707      850 Art nr S4700/4700      1000 Art nr S4710/4710



## FACTS

Roll-Up Classic	700 mm		850 mm		1000 mm		1150 mm	
	Black	Silver	Black	Silver	Black	Silver	Black	Silver
Art nr		4707	S4700	4700	S4710	4710	-	4705
Weight		3,7	4,5 kg		5,3 kg		6,1 kg	
Lightning	Art nr G3660 (grey), S3660 (black), 75 W, black, 3 m cable.							
Spotlight case	Art nr 4609							
Set-up time	30 seconds							
System material	Black lacquered aluminium/silver colour							
Banner material	Paper/laminate/fabric							